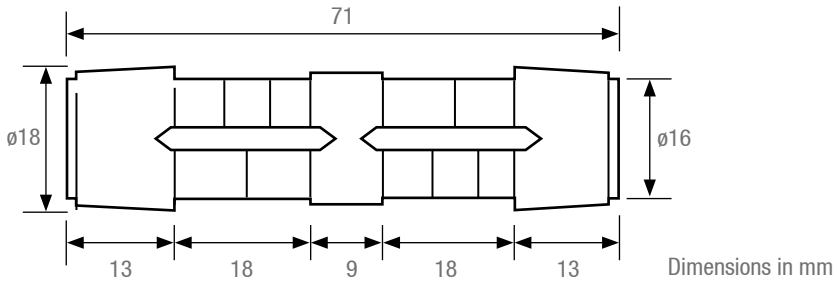


Preinsulated sleeve E140



K039



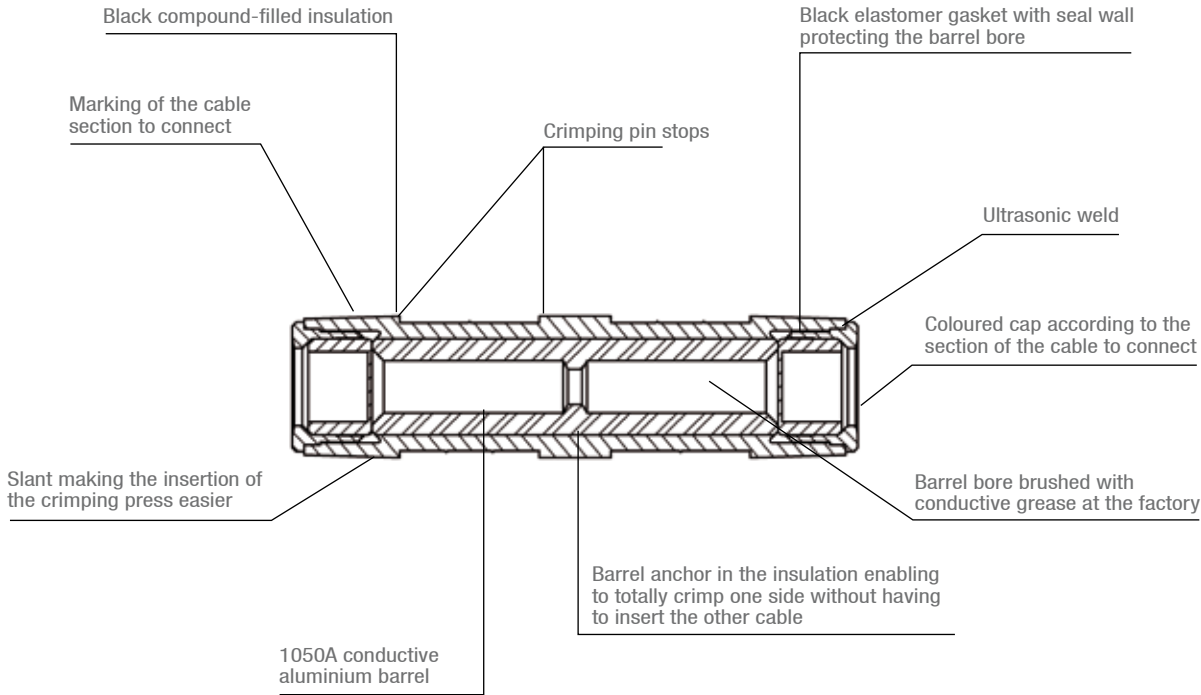
Application

This preinsulated sleeve is designed for the connection of copper or aluminium stranded core overhead insulated conductors with traction or with no mechanical load. It is used for the installation, repair or modification of low voltage service lines. The junction can be established between two conductors of equal or unequal sections. All combinations of sections are possible. The section of the cables ranges goes from 6 up to 35mm².

Description

- The sleeve can be used in mechanical traction.
- The sleeve has got an excellent dielectric strength, greater than 6kV.
- The materials are protected against UV.

This preinsulated sleeve meets the requirements of the **NF C 33-021** and **EN 50-483** standards.



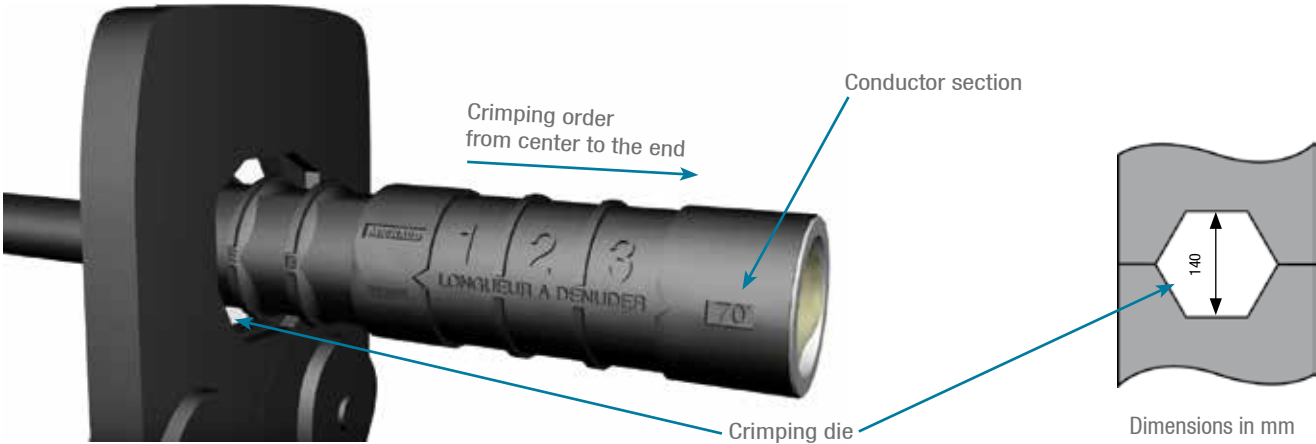
Installation

Preparation of the conductors to be connected:

- Cut the cables using a device that does not scratch the core.
- Strip the conductors over a length of 23mm.
- Brush the conductors to be connected using neutral grease to remove the oxide film. Do not wipe the conductors cleaned in this way.
- Insert the conductors fully into the sleeve bores.

Crimping:

- Both conductors do not need to be inserted before crimping. You can insert one, crimp it, insert the second one and crimp it.



Installation video available on [www.michaud-export.com](http://www.michaud-export.com)

Code	Designation	Leading-in cable section (mm²)	Leading-in colour	Leading-out cable section (mm²)	Leading-out colour	Weight (kg)	Sales unit
K030	PREINSULATED SLEEVE (E140) MJPB 6	6	BROWN	6	BROWN	0.030	10
K031	PREINSULATED SLEEVE (E140) MJPB 10-6	10	GREEN	6	BROWN	0.030	10
K032	PREINSULATED SLEEVE (E140) MJPB 16-6	16	BLUE	6	BROWN	0.030	10
K033	PREINSULATED SLEEVE (E140) MJPB 25-6	25	ORANGE	6	BROWN	0.030	10
K035	PREINSULATED SLEEVE (E140) MJPB 10	10	GREEN	10	GREEN	0.030	10
K036	PREINSULATED SLEEVE (E140) MJPB 16-10	16	BLUE	10	GREEN	0.030	10
K037	PREINSULATED SLEEVE (E140) MJPB 25-10	25	ORANGE	10	GREEN	0.030	10
K039	PREINSULATED SLEEVE (E140) MJPB 16	16	BLUE	16	BLUE	0.030	10
K040	PREINSULATED SLEEVE (E140) MJPB 25-16	25	ORANGE	16	BLUE	0.030	10
K053	PREINSULATED SLEEVE (E140) MJPB 35-16	35	RED	16	BLUE	0.020	10
K042	PREINSULATED SLEEVE (E140) MJPB 25	25	ORANGE	25	ORANGE	0.020	10
K054	PREINSULATED SLEEVE (E140) MJPB 35-25	35	RED	25	ORANGE	0.020	10
K055	PREINSULATED SLEEVE (E140) MJPB 35	35	RED	35	RED	0.020	10



SEE SHEET  
INSTALLATION / Hydraulic crimping tool